



SEE NEXT PAGE

South West Quarter of Section N9 E20 T4 G.  
Pat'd by J.H. Reetail.

Ogden Five Acre Plat A.

Ogden Five Acre Plat A.

THIRD

SECOND

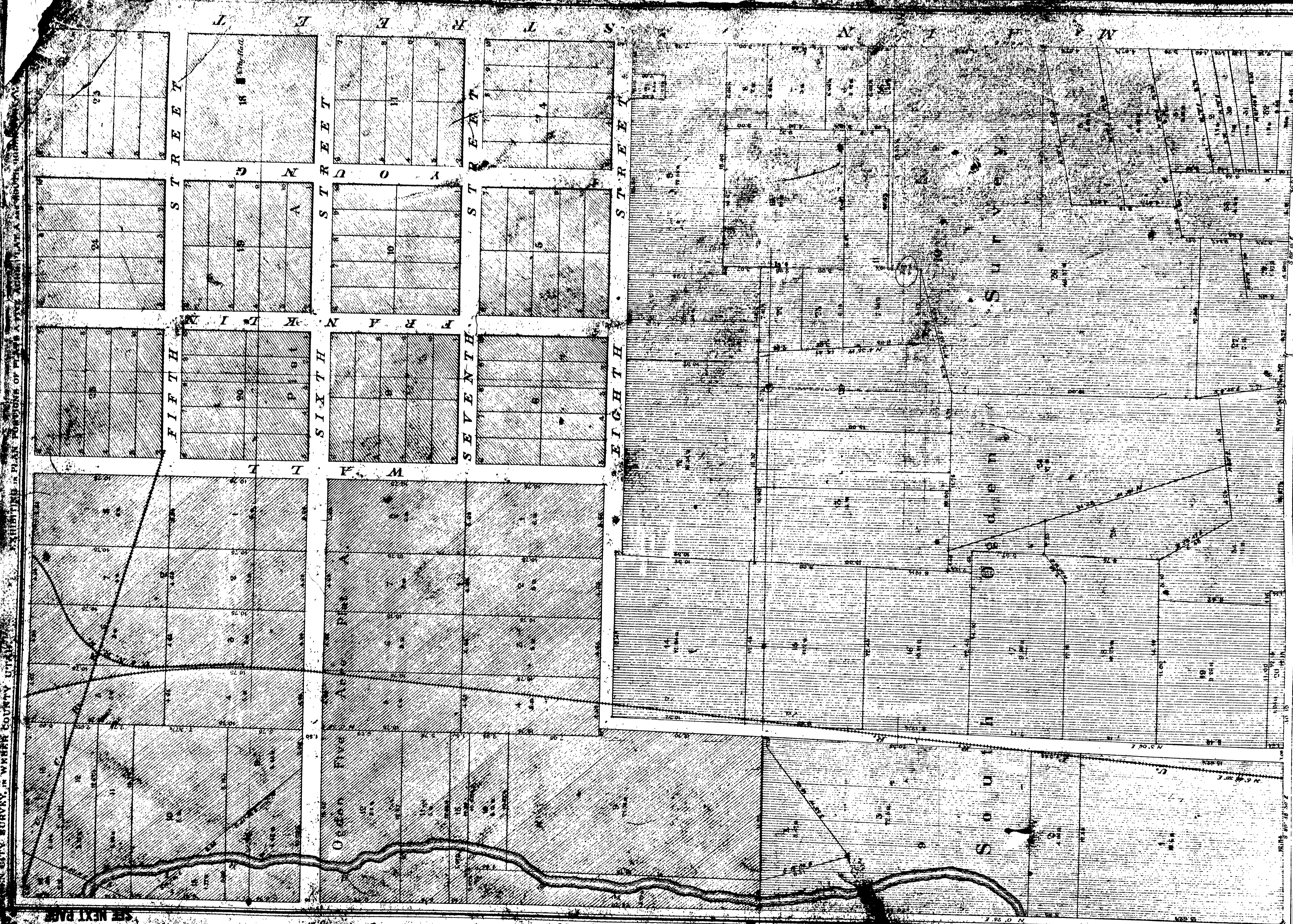
FIRST

FRANKLIN

KNOX

MINNAPOLIS

JUN 1886



CITY SURVEY, IN WEBER COUNTY UTAH  
 EXHIBITING IN PLAN PORTIONS OF PLATS A AND B AND C AND D AND E AND F AND G AND H AND I AND J AND K AND L AND M AND N AND O AND P AND Q AND R AND S AND T AND U AND V AND W AND X AND Y AND Z AND AA AND AB AND AC AND AD AND AE AND AF AND AG AND AH AND AI AND AJ AND AK AND AL AND AM AND AN AND AO AND AP AND AQ AND AR AND AS AND AT AND AU AND AV AND AW AND AX AND AY AND AZ AND BA AND BB AND BC AND BD AND BE AND BF AND BG AND BH AND BI AND BJ AND BK AND BL AND BM AND BN AND BO AND BP AND BQ AND BR AND BS AND BT AND BU AND BV AND BW AND BX AND BY AND BZ AND CA AND CB AND CC AND CD AND CE AND CF AND CG AND CH AND CI AND CJ AND CK AND CL AND CM AND CN AND CO AND CP AND CQ AND CR AND CS AND CT AND CU AND CV AND CW AND CX AND CY AND CZ AND DA AND DB AND DC AND DD AND DE AND DF AND DG AND DH AND DI AND DJ AND DK AND DL AND DM AND DN AND DO AND DP AND DQ AND DR AND DS AND DT AND DU AND DV AND DW AND DX AND DY AND DZ AND EA AND EB AND EC AND ED AND EE AND EF AND EG AND EH AND EI AND EJ AND EK AND EL AND EM AND EN AND EO AND EP AND EQ AND ER AND ES AND ET AND EU AND EV AND EW AND EX AND EY AND EZ AND FA AND FB AND FC AND FD AND FE AND FF AND FG AND FH AND FI AND FJ AND FK AND FL AND FM AND FN AND FO AND FP AND FQ AND FR AND FS AND FT AND FU AND FV AND FW AND FX AND FY AND FZ AND GA AND GB AND GC AND GD AND GE AND GF AND GG AND GH AND GI AND GJ AND GK AND GL AND GM AND GN AND GO AND GP AND GQ AND GR AND GS AND GT AND GU AND GV AND GW AND GX AND GY AND GZ AND HA AND HB AND HC AND HD AND HE AND HF AND HG AND HH AND HI AND HJ AND HK AND HL AND HM AND HN AND HO AND HP AND HQ AND HR AND HS AND HT AND HU AND HV AND HW AND HX AND HY AND HZ AND IA AND IB AND IC AND ID AND IE AND IF AND IG AND IH AND II AND IJ AND IK AND IL AND IM AND IN AND IO AND IP AND IQ AND IR AND IS AND IT AND IU AND IV AND IW AND IX AND IY AND IZ AND JA AND JB AND JC AND JD AND JE AND JF AND JG AND JH AND JI AND JJ AND JK AND JL AND JM AND JN AND JO AND JP AND JQ AND JR AND JS AND JT AND JU AND JV AND JW AND JX AND JY AND JZ AND KA AND KB AND KC AND KD AND KE AND KF AND KG AND KH AND KI AND KJ AND KK AND KL AND KM AND KN AND KO AND KP AND KQ AND KR AND KS AND KT AND KU AND KV AND KW AND KX AND KY AND KZ AND LA AND LB AND LC AND LD AND LE AND LF AND LG AND LH AND LI AND LJ AND LK AND LL AND LM AND LN AND LO AND LP AND LQ AND LR AND LS AND LT AND LU AND LV AND LW AND LX AND LY AND LZ AND MA AND MB AND MC AND MD AND ME AND MF AND MG AND MH AND MI AND MJ AND MK AND ML AND MM AND MN AND MO AND MP AND MQ AND MR AND MS AND MT AND MU AND MV AND MW AND MX AND MY AND MZ AND NA AND NB AND NC AND ND AND NE AND NF AND NG AND NH AND NI AND NJ AND NK AND NL AND NM AND NN AND NO AND NP AND NQ AND NR AND NS AND NT AND NU AND NV AND NW AND NX AND NY AND NZ AND OA AND OB AND OC AND OD AND OE AND OF AND OG AND OH AND OI AND OJ AND OK AND OL AND OM AND ON AND OO AND OP AND OQ AND OR AND OS AND OT AND OU AND OV AND OW AND OX AND OY AND OZ AND PA AND PB AND PC AND PD AND PE AND PF AND PG AND PH AND PI AND PJ AND PK AND PL AND PM AND PN AND PO AND PP AND PQ AND PR AND PS AND PT AND PU AND PV AND PW AND PX AND PY AND PZ AND QA AND QB AND QC AND QD AND QE AND QF AND QG AND QH AND QI AND QJ AND QK AND QL AND QM AND QN AND QO AND QP AND QQ AND QR AND QS AND QT AND QU AND QV AND QW AND QX AND QY AND QZ AND RA AND RB AND RC AND RD AND RE AND RF AND RG AND RH AND RI AND RJ AND RK AND RL AND RM AND RN AND RO AND RP AND RQ AND RR AND RS AND RT AND RU AND RV AND RW AND RX AND RY AND RZ AND SA AND SB AND SC AND SD AND SE AND SF AND SG AND SH AND SI AND SJ AND SK AND SL AND SM AND SN AND SO AND SP AND SQ AND SR AND SS AND ST AND SU AND SV AND SW AND SX AND SY AND SZ AND TA AND TB AND TC AND TD AND TE AND TF AND TG AND TH AND TI AND TJ AND TK AND TL AND TM AND TN AND TO AND TP AND TQ AND TR AND TS AND TT AND TU AND TV AND TW AND TX AND TY AND TZ AND UA AND UB AND UC AND UD AND UE AND UF AND UG AND UH AND UI AND UJ AND UK AND UL AND UM AND UN AND UO AND UP AND UQ AND UR AND US AND UT AND UY AND UZ AND VA AND VB AND VC AND VD AND VE AND VF AND VG AND VH AND VI AND VJ AND VK AND VL AND VM AND VN AND VO AND VP AND VQ AND VR AND VS AND VT AND VU AND VV AND VW AND VX AND VY AND VZ AND WA AND WB AND WC AND WD AND WE AND WF AND WG AND WH AND WI AND WJ AND WK AND WL AND WM AND WN AND WO AND WP AND WQ AND WR AND WS AND WT AND WU AND WV AND WW AND WX AND WY AND WZ AND XA AND XB AND XC AND XD AND XE AND XF AND XG AND XH AND XI AND XJ AND XK AND XL AND XM AND XN AND XO AND XP AND XQ AND XR AND XS AND XT AND XU AND XV AND XW AND XX AND XY AND XZ AND YA AND YB AND YC AND YD AND YE AND YF AND YG AND YH AND YI AND YJ AND YK AND YL AND YM AND YN AND YO AND YP AND YQ AND YR AND YS AND YT AND YU AND YV AND YW AND YX AND YY AND YZ AND ZA AND ZB AND ZC AND ZD AND ZE AND ZF AND ZG AND ZH AND ZI AND ZJ AND ZK AND ZL AND ZM AND ZN AND ZO AND ZP AND ZQ AND ZR AND ZS AND ZT AND ZU AND ZV AND ZW AND ZX AND ZY AND ZZ

SEE NEXT PAGE

UNDER THE DIRECTION OF WASHINGTON JENKINS COUNTY SURVEYOR, FROM SPECIAL SURVEYS OF 1886

for record Aug 20<sup>th</sup> 1886. Recorded September 1886.



To the Hon. The Committee on Public Lands

for Ogden City Corporation

Gentlemen:

I have the honor to herewith present my report of special surveys which were provided for by resolutions of the City Council of Ogden City, and prosecuted under my direction and by your orders. The object to be derived in this survey was to definitely locate the boundary lines of the City proper, and parcels otherwise acquired by the City as a corporation. Also to adjust certain errors which have heretofore existed upon the City Map of the Recorder's Office, as was set forth in a previous letter to your Committee.

While this does not claim to be a complete survey of the City, it may be said, that it is the foundation for a more complete and detailed survey of the City is laid. And it is urged, that work of this nature was very much needed. The Southern, Eastern and Western boundary lines were not heretofore well defined, and distances and bearings without number were erroneous in many instances, and in others were entirely omitted on the old plat.

The fieldwork of this survey began on April 25<sup>th</sup> 1886 under the orders of the Committee on Public Lands, and was continued with the utmost care and dispatch up to the 15<sup>th</sup> day of May, 1886.

The 26-27<sup>th</sup> of May were also occupied in this work of the survey, and concluding this same. 38 days in all were spent, in which time nearly the whole length of the boundary line of the City proper was measured and marked at prominent points by suitable monuments hereafter to be more fully described. That portion of the West line of the City Corporation lying north of Fourth Street and South of what is known as Lynn Street has also been located definitely, and monuments erected at suitable points on the said line, for the information of the public. This line as described by the Charter of Ogden City, bears due North and South through the junction of the Weber and Ogden Rivers, but this junction having by the natural forces of the waters working against the sandy soil of the adjacent country, been moved many classes to the westward and being in fact a movable point it was considered wise to locate by suitable posts, the line as it existed at the time of the enactment of the statute, granting the Charter to Ogden City. This was done in the best possible manner by consulting the settlers who owned lands in the vicinity of the said junction, and that particular

date and who were perfectly familiar with its location. Mr Charles F. Middleton, Mr Thomas Doxy and Mr David Jenkins, the latter having been for many years, County Surveyor, were each consulted in the matter, and their testimony was unanimous upon the one point hereafter to be described as being the junction of the Ogden and Weber rivers at that date aforementioned viz 1861. (see Charter of Ogden City). The true meridian of the City has been ascertained from the Report of the United States Geographical Survey made here in 1873, and to which all the bearings and Azimuths here given are referred. The following letter was received by me in answer to my inquiry in relation to the true Azimuth of a line drawn through the South end of the Ogden Base line and through the dome of the U. S. Observatory at Ogden:

Office of the Chief of Engineers  
United States Army

Washington D. C. April 17 1886

Mr Washington Jenkins  
Ogden City  
Utah

Sir

In reply to your letter of February 20-1886, requesting information concerning the Base line at Ogden Utah, I have to inform you that Captain Geo. M. Wheeler, Corps of Engineers, the officer formerly in charge of surveys east of the 100<sup>th</sup> Meridian, reports as follows: "The adopted length of Ogden Base, is 22 209.007 feet (see A. R. 1878 p 15). Its Azimuth (being a mean of computed azimuths at either extremity) is  $80^{\circ} 1' 14''$  to the computed azimuth from South end of base to the Observatory Dome is  $107^{\circ} 14' 50.1''$ , the log distance being 3.4625227."

By direction of the Chief of Engineers

Very respectfully

Your obedient servant

H. M. Adams  
Captain of Engineers

The local value of the information contained in the above letter is apparent, as it will denote the uncertainty which has heretofore existed in the absolute positions of these sections, and the

The South end of the Base mentioned above is located and marked by a brick pier at the South end of Main Street near the point where it diverges to the westward. The North end of the Base is located on a mound in main Street near the residence of Mr Southwell in Lynn district, and was also marked by a brick pier and an iron post, but which has since been removed by individuals hauling sand from that locality. The difficulty of obtaining the results given in the above letter, without the aid of the most perfect instruments, such as only the general government is capable of purchasing may be readily understood; hence we have the bearing to 1/10 of an arc second, and that to beyond the possibility of a doubt as it was obtained by the highest authority in the land.

In beginning the survey of Ogden City in April 1886 I found myself of the advantages above described, and observed the same made by the intersection of the Ogden Base with the Southern boundary of the City proper, which gave the true Azimuths of the said boundaries. As is well understood the boundaries of the City proper are described as being the boundaries of certain sections and quarter sections of the U. S. land survey referred to the Salt Lake Meridian. Many suppose that these lines bear due North and South, or East and West, but such is not the case; it is rather the exception than the rule. This is particularly the case on the South line of sections 32 and 33 Township 6. N. Range One West, which forms the Southern boundary of the City proper, whereas not a stone of the different corners existing are in the same straight line; the lines forming the Southern boundary of the City is therefore a zig zag line. The bearings of each line between adjacent quarter section corners have been carefully observed and notes of the same Azimuths were obtained at each prominent corner. To reference objects, such as Observatory Peak - Bunkerhead Peak and the Peak, and to Court House - Observatory Dome. The true position and identification of the said corner. The observations for the same were made exclusively from the premises of the instruments, and not from the meridian itself. It is believed that the

present survey are reduced to very small proportions and will not exceed 1 minute of arc in any case, while the distances will not exceed 1 in 2000, as measured with a standard 66 ft steel chain. This survey also included the measurements of all the fractions of lots and block lying adjacent to the section lines constituting the boundary of the city lands, which had not been previously known, and from the field work of said survey the proper dimensions of the same computed and placed upon the accompanying maps. By comparison of the new maps with the old one, many alterations will be found to have been made, all of which has been done for the purpose of correcting the errors of the old map, and of supplying omission on the old one. It is believed that the new maps are as complete as it is possible to make them with the information at hand, and if any errors still remain their presence is mainly due to the incompleteness of the survey as has been stated above. The results arrived at are such an improvement upon the former condition of affairs in this connection that the expenditure of money necessary to reach this end may be considered to be very judicious. In Block No 3 South Ogden many changes and additions have been made. The said block has been made to extend farther backward to include other lots heretofore not numbered but which had been sold by the city corporation to individuals, the surveys of which had been found very incomplete. It will be discovered that the distances placed upon the new maps in this connection do not correspond with dimensions given in the deeds of conveyance of the said lands; but upon inspection of the said deeds their errors will be apparent. The results arrived at upon the maps are entirely close to the actual surveys, both observations and computations, mainly the latter. It need not be stated that the lengths of all the lines represented upon the maps, as being the results of actual measurements in connection with this special survey, have been measured by me, on the ground. This is not the case, only a sufficient number of distances were measured on the field as were necessary to form a basis for computing other lines and angles in connection therewith; the greater part of the work of the special survey having

been accomplished in the office by computation, based upon field work. The computations have been repeated in order to reduce the possible errors, and the results by different methods arranged; the computations are to be relied upon. The accompanying notes on the intersections of the centers of streets in the main portion of the city, represent surveys executed by me for private individuals, during a period of about four years, and used to identify the points of beginning from which the different surveys were made. I have used great care in the establishment of the points mentioned, first laying out the center of Main Street from end to end, or all that portion included in the city proper, then working to the east or West as the occasion required, running lines through the centers of 8th and 9th Street, at right angles to Main Street &c. for each of the other streets, with but one exception, viz 14th Street West of Main in which it was thought to be impracticable. The true azimuth of the center of Main Street from the South end to the intersection of the 1/4 section line leading East & West in Section 20 Township 6 North, Range One West, is N. 0° 58' E according to the U.S. Geographical Survey.

The following table contains the azimuths and other information of interest and use, in connection with certain lines, and of the points named. All azimuths are reckoned from the South, around to the right, through the West, so that the azimuths of points due South, West, North and East, are respectively, 00°, 90°, 180°, 270°. The column headed "Azimuth" gives the true bearing from the station in the first column to the one in the third column. The column of remarks contains a description of objects in the vicinity of the station in the first column, whenever such description had been made in the field. The column of distances cannot be said to be complete, but it contains the distances from the points or stations in the first column to those in the third column as measured upon the ground. Table 1 contains a record of 145 different positions and 256 azimuth readings taken in the field work of the special survey, 1896 and compiled directly from the field notes.

TABLE I

(5)	(1)	(2)	(3)	(4)
Distances	Name of Station	Azimuth	To Station	Remarks
	S. E. cor. Sec. 33 T. 6 N. R. 1 W.	275° 51'	Observatory Peak	N. E. 1/4 Sec. 33 long building
40.92 ch	"	98° 26' 30"	S. W. cor. Sec. 33 T. 6 N. R. 1 W.	"
	"	115° 24'	Summit of N. E. Observatory	"
39.60 ch	"	174° 56'	N. E. cor. Sec. 33 T. 6 N. R. 1 W.	"
	"	198° 04'	Loggia Peak	"
	N. E. cor. Sec. 33 T. 6 N. R. 1 W.	194° 39'	"	"
	"	125° 19' 30"	Spire on Water below Main	"
39.60 ch	"	259° 56'	S. E. cor. Sec. 33 T. 6 N. R. 1 W.	"
40.10 ch	"	270° 39'	N. E. cor. Sec. 33 T. 6 N. R. 1 W.	"
40.29 ch	"	180° 32'	N. E. cor. Sec. 33 T. 6 N. R. 1 W.	"
40.10 ch	N. E. cor. Sec. 33 T. 6 N. R. 1 W.	90° 39'	N. E. cor. Sec. 33 T. 6 N. R. 1 W.	"
40.13 ch	"	198° 25' 30"	N. E. cor. Sec. 33 T. 6 N. R. 1 W.	"
	"	115° 57'	Boat House Spire	"
	"	180° 40'	Observatory dome	"
	"	185° 16'	Observatory on Main Street	"
40.13 ch	N. E. cor. Sec. 33 T. 6 N. R. 1 W.	00° 23' 30"	N. E. cor. Sec. 33 T. 6 N. R. 1 W.	150 ft. ch. to center of 14th St.
	"	192° 1' 30"	Loggia Peak	"
	"	202° 53'	Boat House Spire	"
	"	99° 23' 30"	Boat House Spire	"
	Center of N. W. 1/4 Sec. 33 T. 6 N. R. 1 W.	298° 55'	Observatory Peak	"
	10th St. on Main Street	190° 15'	Boat House Spire	N. W. 1/4 Sec. 33 to N. E. cor. Sec. 33
	"	106° 00'	Observatory dome	S. W. 1/4 Sec. 33 to N. E. cor. Sec. 33
6.73 ch	Center of N. W. 1/4 Sec. 33 T. 6 N. R. 1 W.	90° 26' 30"	S. W. cor. Sec. 33 T. 6 N. R. 1 W.	S. W. 1/4 Sec. 33 to N. E. cor. Sec. 33
	"	199° 30'	Loggia Peak	"
	"	274° 59'	Observatory Peak	"
	"	190° 58'	Center of Main Street	"
	"	117° 45'	Observatory dome	"
11.91 ch	Center of Main Street	270° 15'	S. E. cor. Sec. 33 T. 6 N. R. 1 W.	S. E. 1/4 Sec. 33 to N. E. cor. Sec. 33
24.96	"	00° 58'	Water below Main Street	"
	"	190° 58'	Center of Main Street	"
29.02 ch	Center of Main Street	90° 45'	N. E. cor. Sec. 33 T. 6 N. R. 1 W.	handwritten
	"	185° 58'	Boat House Spire	"
	"	206° 24'	Loggia Peak	"
	"	270° 39'	Observatory Peak	"
	"	190° 39'	Observatory dome	"

TABLE I.

Distance	Name of Station	Approximate	To Station	Remarks
100.92 ch	S.W. cor. S. 24th & N. 1st	270 24 50	S.W. cor. S. 24th & N. 1st	67 ch to S. corner East Street Cedar Post
29.55 ch	S.W. cor. S. 24th & N. 1st	90 19	S.W. cor. S. 24th & N. 1st	(11.97 ch to center Main)
29.55 ch	S.W. cor. S. 24th & N. 1st	90 14 5	S.W. cor. S. 24th & N. 1st	(11.97 ch to center Main)
29.55 ch	S.W. cor. S. 24th & N. 1st	270 19	S.W. cor. S. 24th & N. 1st	67 ch to S. corner East Street Cedar Post
29.94 ch	S.W. cor. S. 24th & N. 1st	270 14 5	S.W. cor. S. 24th & N. 1st	67 ch to S. corner East Street Cedar Post
		209 50 50	Byrie Peak	
40.19 ch		90 11 50	S.W. cor. S. 24th & N. 1st	
27.35 ch		90 11 50	Center N. R. Street	
29.15		90 11 50	U. P. R. R.	
27.25	Center N. R. Street	270 11 50	S.W. cor. S. 24th & N. 1st	(11.97 ch to center Main)
		212 04	Count House Spire	80 ch to S. corner East Street Cedar Post
		212 19 50	Byrie Peak	
		159 06	Center N. R. Street	
		275 17	Observatory Peak	
12.51		90 11 50	S.W. cor. S. 24th & N. 1st	
	Center U. P. R. R. Street	185 14 50	U. P. R. R. to Station	1.00 ch to center N. R. Street
		213 53	Count House Spire	
		212 24	Byrie Peak	
		278 16	Observatory Peak	
40.19	S.W. cor. S. 24th & N. 1st	270 11 50	S.W. cor. S. 24th & N. 1st	U. P. R. R. on S. boundary
		278 11 50	Observatory Peak	
		187 12	Buildings Peak	
		213 35 50	Byrie Peak	
		278 06 50	Water Hall	
98.82 ch		180 25	Center of N. R. Street	
121.78		180 25	S.W. cor. S. 24th & N. 1st	
98.82 ch	Center N. R. Street	00 25	S.W. cor. S. 24th & N. 1st	(11.97 ch to center Main)
		269 52 50	Count House Spire	
00.14 ch		00 25	Center U. P. R. R. Street	
22.56 ch		180 25	S.W. cor. S. 24th & N. 1st	
		221 03 50	Byrie Peak	
		217 24	Snow Works	
22.56 ch	S.W. cor. S. 24th & N. 1st	00 25	S.W. cor. S. 24th & N. 1st	(11.97 ch to center Main)
		223 10	Byrie Peak	
		299 54	Observatory Peak	
		91 20	Observatory dome	

TABLE I.

Distance	Name of Station	Approximate	To Station	Remarks
111.99 ch		00 25	S.W. cor. S. 24th & N. 1st	
29.75 ch		180 27	S.W. cor. S. 24th & N. 1st	
11.21 ch		180 27	Center N. R. Street	
	Center N. R. Street	270 55	Center N. R. Street	
27.57 ch		180 27	S.W. cor. S. 24th & N. 1st	
12.21 ch		00 27	S.W. cor. S. 24th & N. 1st	
		224 25	Byrie Peak	
		298 26	Observatory Peak	
		298 51 50	Count House Spire	
		188 21 50	Buildings Peak	
		91 23	Observatory dome	
		915 15 50	Center School Spire	
29.75 ch	S.W. cor. S. 24th & N. 1st	00 27	S.W. cor. S. 24th & N. 1st	
27.57 ch		00 27	Center N. R. Street	
		277 21 50	Byrie Peak	
		188 24	Buildings Peak	
		298 35 50	Observatory Peak	
		218 04 50	Count House Spire	
		206 02	Buildings Spire	
		314 03 50	Center Snow Works	
	Center Main St. N. boundary	00 58	Center Main St. N. boundary	
14.85 ch		00 58	Center Snow Works	
16.04		180 16		
10.93 ch		270 14 5	S.W. cor. S. 24th & N. 1st	
		222 11	Byrie Peak	
		201 52 50	Observatory Peak	
10.93	S.W. cor. S. 24th & N. 1st	90 14 5	Center Main St. N. boundary	
40.06		278 11 5	Center S. 24th & N. 1st	
		222 03	Byrie Peak	
		202 54	Observatory Peak	
		65 24	S. E. cor. Main Mill	
40.06 ch	Center S. 24th & N. 1st	90 14 5	S.W. cor. S. 24th & N. 1st	
29.85 ch		00 58	S.W. cor. S. 24th & N. 1st	
		218 10	Byrie Peak	
		207 44	Observatory Peak	
		06 52	Center Snow Works	

TABLE I.

Distance	Name of Station	Approximate	To Station	Remarks
		175 55	Center Snow Works	
17.76	Center Snow Works	180 52	Center S. 24th & N. 1st	
21.54		06 52	S.W. cor. S. 24th & N. 1st	
19.94 ch		86 54	Center Snow Works	
19.93		06 52	S.W. cor. S. 24th & N. 1st	
		215 13 50	Byrie Peak	
		915 51	Observatory Peak	
13.93 ch	S.W. cor. S. 24th & N. 1st	180 52	Center Snow Works	
31.84 ch		188 52	Center S. 24th & N. 1st	
		211 13 50	Byrie Peak	
		226 27	Center Snow Works	
7.66 ch		06 52	S.W. cor. S. 24th & N. 1st	
		218 25 50	Count House Spire	
		60 22	Observatory dome	
29.85 ch	S.W. cor. S. 24th & N. 1st	180 52	Center Snow Works	
7.66		180 52	S.W. cor. S. 24th & N. 1st	
		277 21	Count House Spire	
		197 26	Buildings Spire	
		206 54	Byrie Peak	
		306 13	Observatory Peak	
20.00 ch		278 52	S.W. cor. S. 24th & N. 1st	
20.00 ch	S.W. cor. S. 24th & N. 1st	90 52	S.W. cor. S. 24th & N. 1st	
40.88 ch		00 05	S.W. cor. S. 24th & N. 1st	
		204 13	Center Snow Works	
		207 24 50	Byrie Peak	
		202 14	Observatory Peak	
		119 00	S. E. cor. Main Mill	
		118 04 50	S.W. cor. S. 24th & N. 1st	
40.88	S.W. cor. S. 24th & N. 1st	180 05	S.W. cor. S. 24th & N. 1st	
20.00		278 52	S.W. cor. S. 24th & N. 1st	
		87 01	Buildings Spire	
		295 22	Observatory Peak	
		204 04	Byrie Peak	
		292 28		
20.00 ch	S.W. cor. S. 24th & N. 1st	00 05	S.W. cor. S. 24th & N. 1st	
20.00 ch		00 05	S.W. cor. S. 24th & N. 1st	

TABLE 1.

Distance	Name of Station	Approximate	To Station	Remarks
190.05	N.W. cor. Sec 27 T. 14 N. R. 1 W.			
140.19 ch		08.58	S.W. cor. Sec 27 T. 14 N. R. 1 W.	
		260.12	Byrie Peak	
		78.55 50	Observatory dome	
		76.08 20	Count house spire	
		146.96	Pavilion spire	
		66.16	East corner of 1st Ward school	
		297.59	Observatory Peak	
20.00	N.W. cor. N.W. 1/4 of Sec 27	90.52	N.W. cor. Sec 27 T. 14 N. R. 1 W.	Being the north east cor. of city lands. 0.71 ch. N. from house 2nd Street and 6.72 ch. E. from E. line
		197.09 50	Byrie Peak	
		70.14 20	E. corner of 1st Ward school	1st Ward Street
		90.05	Observatory dome	
		79.89 20	Count house spire	
140.19 ch		08.58	S.W. cor. Sec 27 T. 14 N. R. 1 W.	
		299.16	Observatory Peak	
		321.19	Whimsey on Robinson house	
		351.12	Whimsey on Robinson house	
140.19 ch	S.W. cor. Sec 27 T. 14 N. R. 1 W.	190.58	N.W. cor. Sec 27 T. 14 N. R. 1 W.	0.70 ch. N. West line 3rd East St. and 5.34 ch. S. to West line 6th Street
140.22 ch		00.52	S.W. cor. N.W. 1/4 of Sec 27	Plat C. Open City Survey
20.00		276.52	N.W. cor. N.W. 1/4 of Sec 27	Being the old U.S. Government section corner, adopted.
140.00		270.52	N.W. cor. N.W. 1/4 of Sec 27	
		108.27 50	Byrie Peak	
		90.17	Observatory dome	
		105.11	Count house spire	
		257.51	Whimsey on Robinson house	
		291.03	Observatory Peak	
		350.18	Center of 5th East St.	
20.00	N.W. cor. N.W. 1/4 of Sec 27	90.52	N.W. cor. Sec 27 T. 14 N. R. 1 W.	Being the north West cor. of Robinsons building. 6.72 ch. N. to E. line 16th East Street and 5.18 ch. South to N. line 6th St. 0.29 ch. E. to W. line 5th St.
		195.18	Byrie Peak	
		247.26 50	Whimsey on Robinson house	
		291.29	Observatory Peak	
	Center 5th East St. on boundary	245.27 50	Whimsey on Robinson house	Plat C. Distorted in Block 71 Plat C.
		100.12	Count house spire	
		292.24	Leine Kilm	
		197.09	Whimsey on Robinson house	
	Center of 1st East St. on N. boundary	226.25 20	Whimsey on Robinson house	Being 1.17 ch. N. 94° 0' W. from N. line N.W. 1/4 Sec 27 T. 14 N. R. 1 W. and 5.91 ch. N. 0° 55' E. from center of 1st East St.

TABLE 1.

Distance	Name of Station	Approximate	To Station	Remarks
		99.16 50	Count house spire	
		166.14 20	Whimsey on Robinson house	
24.16 ch	Center 1st East St. on boundary	08.23 50	S.W. cor. N.W. 1/4 of Sec 27	
5.97 ch		190.23 50	N.W. cor. N.W. 1/4 of Sec 27	
		90.58	Center Main St. & 1st Street	
		192.21 20	Whimsey on Robinson house	
	Center 1st East St. on N. boundary	08.58	Center 1st East St. & 1st Street	0.71 ch. N. from E. line 2nd
		192.20 50	Byrie Peak	
		78.50	Count house spire	
		127.23 50	S.W. cor. Perry Mill	
14.53 ch	Center 1st East St. on N. boundary	270.58	Center 1st East St. on boundary	Stake and pile of stone
5.96 ch		180.58	1st East St. on N. boundary	
		192.23 20	Byrie Peak	
		90.58	Center Main St. & 1st Street	
		92.18 50	Observatory dome	
		102.24 50	Count house spire	
		292.21 50	Observatory Peak	
		8.21	N. Whimsey on Robinson house	
11.50 ch		00.58	Center 1st East St.	
	Center 1st East St. on N. boundary	180.58	N. on N. boundary	boundary boundary line is 18.18. Placed beneath corner
		90.58	5th East St. on N. boundary	Placed beneath corner of earth. May 1st 1856.
		196.12	Byrie Peak	
		245.20	Whimsey on Robinson house	
		102.25	Count house spire	
		92.23	Observatory dome	
	Center 1st East St. on N. boundary	90.58	Center 1st East St. on N. boundary	boundary line is 18.18. Placed here May 5-1856. beneath surface of earth with point on same. 7.100 ch. West from boundary line and 0.71 ch. S. from North boundary line both lands.
		127.24 50	S.W. cor. Perry Mill	
		90.50 50	Open Snow Works	
		79.52	Observatory dome	
		00.58	Center 1st East St.	
		79.15	Count house spire	
		70.12	Pavilion spire	
	Center 1st East St. on N. boundary	180.58	Center 1st East St. on N. boundary	
		197.18	Byrie Peak	
		90.58	Center 1st East St.	
6.72 ch		270.58	N. on N. boundary	

TABLE 1.

Distance	Name of Station	Approximate	To Station	Remarks
		295.24 50	Observatory Peak	
		91.58	Count house spire	
		95.54	Observatory dome	
	Center 1st East St. on N. boundary	46.58	Center Main Street	
	N.W. corner Main St. & 1st St.	180.58	Center Main St. & 1st Street	Stake, situated on corner Main Street 16 7/10 feet N. from E. line 1st St. 8 9/16 3/4 ft. West from Center house spire by triangulation
24.16 ch		270.58	Count house spire	
	Center 1st East St. on N. boundary	180.58	Center 1st East St. on N. boundary	Stake & amount of stone 5.45 ch. N. from N. line City lands
		98.58	1st East St. on N. boundary	
		92.22 50	Observatory dome	
		105.24 50	Count house spire	
	Center 1st East St. on N. boundary	270.58	Center 1st East St. on N. boundary	boundary boundary boulder 5x5 is placed 1ft beneath surface of the earth. May 1st 1856.
		92.58	Main	
		192.58	7th East St. on N. boundary	
		00.58	Center 5th East St. & 1st Street	
		192.01	Byrie Peak	
		251.12	Whimsey on Robinson house	
		106.51 20	Count house spire	
		290.23	Observatory Peak	
		105.53	Pavilion spire	
		92.53	Observatory dome	
	Center 5th East St. on N. boundary	180.58	Center 5th East St. on N. boundary	Center stake driven to surface of earth - South bank of Dry Creek at east bank. done May 1st 1856.
		90.58	Center 1st East St. & Main	
		115.21	Count house spire	
		95.58	Observatory dome	
		197.29	Byrie Peak	
	Center 1st East St. on N. boundary	238.2	Stevens house	
		270.58	Center 1st East St. on N. boundary	
		297.58	Observatory Peak	
		292.05	N. Whimsey on Robinson house	
		277.01 50	Leine Kilm	
	Center 5th East St. on N. boundary	180.58	N. line 5th East St. on N. boundary	
		90.58	Center 5th East St. & Main Street	
		197.07	Byrie Peak	
		290.58	Center 1st East St. on N. boundary	
		275.01	Whimsey on Robinson house	